

GREEN
BROOK
ELECTRICAL

WIRING ACCESSORIES

SafetySure Range Switched & Unswitched Sockets

SafetySure Sockets are available in switched or unswitched versions, they have separate test and reset buttons and are available in white plastic or metalclad.

SafetySure RCD products fully conform to British Standards.

- ✓ **Mechanical flag trip indicators**
- ✓ **Mechanically latched (Passive) - no need to reset after a power loss**
- ✓ **1 Year Guarantee**

Switched Sockets



M22SW
RCD Switched Socket

White
H86.5 x W147 x D35mm (16mm surface projection)
Pack Qty 5



M22SM
RCD Switched Socket

Metalclad
H86.5 x W147 x D50mm
Pack Qty 5

Unswitched Sockets



M22W
RCD Unswitched Socket

White
H86.5 x W147 x D35mm (16mm surface projection)
Pack Qty 5



M22M
RCD Unswitched Socket

Metalclad
H86.5 x W147 x D50mm
Pack Qty 5

TECHNICAL INFORMATION	
Voltage	230V AC ~ 50Hz
Max Operating current	13A (3A inductive)
Rated Trip current	30mA
Typical Trip Speed	<40mS
RCD contact break	Double Pole
Conforms to	BS 7288:2016 & BS 1363

SafetySure Range RCD Fused Connection Unit

All SafetySure RCD Fused Connection Units have separate test and reset buttons and are available in white plastic or metalclad.

SafetySure RCD products fully conform to British Standards.

- ✓ **Mechanical flag trip indicators**
- ✓ **Mechanically latched (Passive) - no need to reset after a power loss**
- ✓ **1 Year Guarantee**

TECHNICAL INFORMATION	
Voltage	230V AC ~ 50Hz
Max Operating current	13A (3A inductive)
Rated Trip current	30mA
Typical Trip Speed	<40mS
RCD contact break	Double Pole
Conforms to	BS 7288:2016 & BS 1363

RCD Fused Connection Unit

M92W RCD Fused Connection Unit

White

H86.5 x W86.5 x D37mm (16mm surface projection)

Pack Qty 5



M92M RCD Fused Connection Unit

Metalclad

H87 x W87 x 507mm (inc. back box)

Pack Qty 5

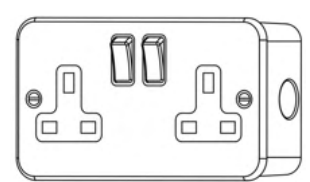
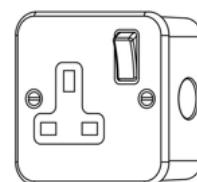
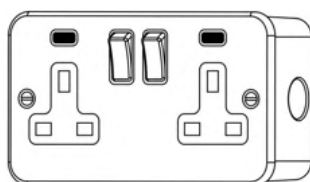
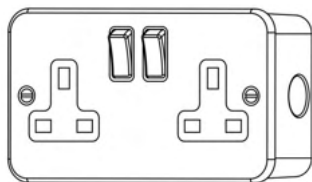
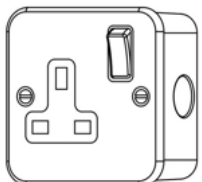


Metalclad 13A Sockets

- ✓ Robust steel construction
- ✓ Surface and flush mounting options
- ✓ Metal back box supplied as standard



	MCSOSS	MCSOST	MCSUSB	MCSOSD1	MCSOSD2
Description	13A Single Switched Socket	13A Twin Switched Socket	13A Twin Switched Socket with Type A USB Charging Ports 3.1A (1 x 2100mA & 1 X 1000mA)	13A Single Switched Socket	13A Twin Switched Socket
Rating	13 Amp , 250V~50Hz				
Pack Quantity	5				
Barcode	5012739647222	5012739647239	5012739653858	5012739647246	5012739647253
Switch Type	Single Pole			Double Pole	
Terminal Capacity	3 x 2.5mm ² , 3 x 4.0mm ² , 2 x 6.0mm ²				
Class	Class1 - Front plate must be earthed				
IP Rating	IP2XD				
Ambient Operating Temp	-5° to +40°C				
Fixing Centres	60.3mm	120.6mm	120.6mm	60.3mm	120.6mm
Knock-outs	5	8	8	5	8
Flush Mounted Box Depth	25mm				
Back Box Depth	40mm				
Dimensions Plate Thickness L x H x W	81 x 81 x 4mm	81 x 142 x 4m	81 x 142 x 4m	81 x 81 x 4mm	81 x 142 x 4mm
Conforms To	BS 1363				

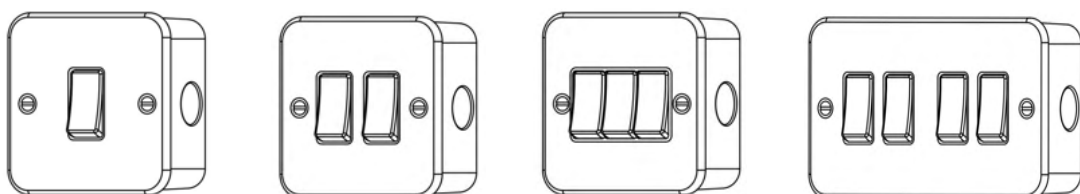


Metalclad 10AX Switches

- ✓ Robust steel construction
- ✓ Surface and flush mounting options
- ✓ Metal back box supplied as standard



	MCSW12	MCSW22	MCSW32	MCSW42
Description	10AX Switch - 1 Gang	10AX Switch - 2 Gang	10AX Switch - 3 Gang	10AX Switch - 4 Gang
Rating	10A(X) Amp , 250V~50Hz			
Pack Quantity	5			
Barcode	5012739647161	5012739647178	5012739647185	5012739647192
Switch Type	Single Pole			
Terminal Capacity	4 x 1.0mm ² , 4 x 1.5mm ² , 2 x 2.5mm ² , 1 x 4.0mm ²			
Class	Class1 - Front plate must be earthed			
IP Rating	IP2XD			
Ambient Operating Temp	-5° to +40°C			
Fixing Centres	60.3mm			120.6mm
Knock-outs	5			8
Flush Mounted Box Depth	25mm			
Back Box Depth	40mm			
Dimensions Plate Thickness L x H x W	81 x 81 x 4mm			81 x 142 x 4mm
Conforms To	BS EN 60669-1			

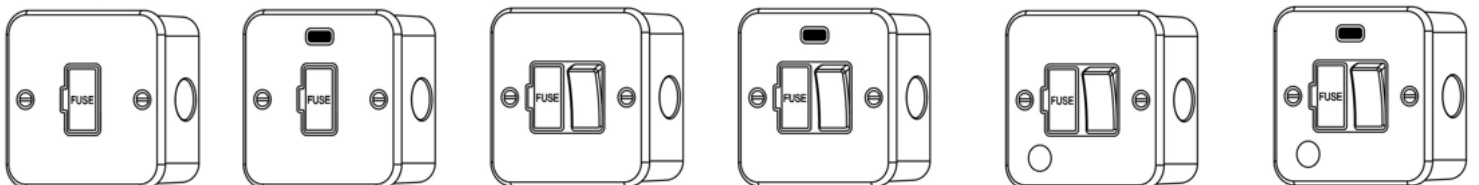


Metalclad 13A Fused Connection Units

- ✓ Robust steel construction
- ✓ Surface and flush mounting options
- ✓ Metal back box supplied as standard



	MCSPU	MCSPUN	MCSPS	MCSPSN	MCSPSFO	MCSPSFON
Description	13A Fused Connection Unit	13A Fused Connection Unit, with Neon	13A Switched Fused Connection Unit	13A Switched Fused Connection Unit, with Neon	13A Switched Fused Connection Unit, Flex Outlet	13A Switched Fused Connection Unit, Flex Outlet with Neon
Rating	13 Amp , 250V~50Hz					
Pack Quantity	5					
Barcode	5012739647260	5012739647277	5012739647284	5012739647291	5012739647307	5012739647314
Switch Type	Double Pole					
Terminal Capacity	3 x 2.5mm ² , 3 x 4.0mm ² , 2 x 6.0mm ² (L&N) / 3 x 2.5mm ² , 2 x 4.0mm ² , 1 x 6.0mm ² (Earth)					
Class	Class1 - Front plate must be earthed					
IP Rating	IP2XD					
Ambient Operating Temp	-5° to +40°C					
Fixing Centres	60.3mm					
Knock-outs	5					
Flush Mounted Box Depth	25mm					
Back Box Depth	40mm					
Dimensions Plate Thickness L x H x W	81 x 81 x 4mm					
Conforms To	BS 1363					

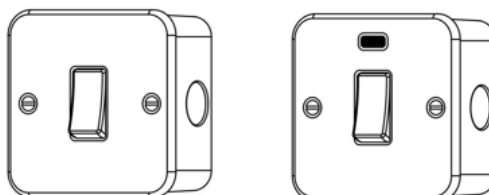


Metalclad 20A Double Pole Switches

- ✓ Robust steel construction
- ✓ Surface and flush mounting options
- ✓ Metal back box supplied as standard



	MCSWDP1	MCSWDP1N
Description	20A Double Pole Switch	20A Double Pole Switch with Neon
Rating	20 Amp , 250V~50Hz	
Pack Quantity	5	
Barcode	5012739647208	5012739647215
Switch Type	Double Pole	
Terminal Capacity	3 x 2.5mm ² , 3 x 4.0mm ² , 2 x 6.0mm ² (L&N) / 3 x 2.5mm ² , 2 x 4.0mm ² , 1 x 6.0mm ² (Earth)	
Class	Class1 - Front plate must be earthed	
IP Rating	IP2XD	
Ambient Operating Temp	-5° to +40°C	
Fixing Centres	60.3mm	
Knock-outs	5	
Flush Mounted Box Depth	25mm	
Back Box Depth	40mm	
Dimensions Plate Thickness L x H x W	81 x 81 x 4mm	
Conforms To	BS EN 60669-1	

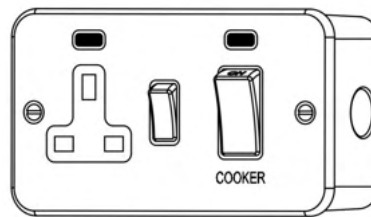


Metalclad 45A Switches

- ✓ Robust steel construction
- ✓ Surface and flush mounting options
- ✓ Metal back box supplied as standard



	MCRSN	MCCO2
Description	45A Switch, with Neon	45A Cooker Outlet Unit
Rating	45 Amp , 250V~50Hz	
Pack Quantity	5	
Barcode	5012739647376	5012739647369
Switch Type	Double Pole	
Terminal Capacity	4 x 4.0mm ² , 3 x 6.0mm ² , 1 x 16.0mm ² (L&N) / 3 x 2.5mm ² , 2 x 4.0mm ² , 1 x 6.0mm ² (Earth)	
Class	Class1 - Front plate must be earthed	
IP Rating	IP2XD	
Ambient Operating Temp	-5° to +40°C	
Fixing Centres	60.3mm	
Knock-outs	5	8
Back Box Depth	40mm	
Dimensions Plate Thickness L x H x W	81 x 81 x 4mm	81 x 142 x 4mm
Conforms To	BS EN 60669-1 (BS 4177 MCCO2)	



Metalclad Blanking Plates & Back Boxes

- ✓ Fits Norslo Metalclad Range
- ✓ Robust steel construction
- ✓ 1 gang & 2 gang with Brass earth terminal



	MCCP1	MCCP2	MCB1	MCB2
Description	1 Gang Cover Plate	2 Gang Cover Plate	1 Gang Back Box	2 Gang Back Box
Pack Quantity	20	10	5	5
Barcode	5012739647321	5012739647345	5012739647338	5012739647352
Terminal Capacity	3 x 2.5mm ² , 2 x 4.0mm ² , 1 x 6.0mm ² Earth			
Class	Class1 - Front plate must be earthed			
IP Rating	IP2XD (when assembled)			
Fixing Centres	60.3mm	120.6mm	60.3mm	120.6mm
Dimensions Plate Thickness L x H x W	81 x 81 x 4mm	81 x 142 x 4mm	81 x 81 x 40mm	81 x 142 x 40mm
Conforms To	BS4662			



Shaver Sockets

Traditional single and double gang dual voltage shaver sockets suitable for bathroom use.

- ✓ One shot thermal protection
- ✓ Accepts British and Continental plugs
- ✓ Auto switching shutters - prevents two plugs being inserted at the same time
- ✓ 1 Year Guarantee

Power saving only
ON when plug is inserted

TECHNICAL INFORMATION	
20VA double wound transformer	
Voltage	230V AC 115/230V AC
Conforms to	BS EN 61558-1 & BS EN 61558-2-5

Double Gang

SHAS Double Gang Shaver Socket

Curved front face
Manufactured in High Gloss
Thermoplastic - White
H146 x W85 x D49mm
Pack Qty 1



P17 Double Gang Shaver Socket

Flat front face - White
Scratch Resistant Urea
Dual Voltage
H148 x W87 x D49mm
Pack Qty 1



P17C Double Gang Shaver Socket

Flat front face - Chrome
Scratch Resistant Urea
Dual Voltage
H147 x W88 x D49mm
Pack Qty 1



Single Gang

HS1 Single Gang Shaver Socket

with standard White front plate
Manufactured in High Gloss Thermoplastic
Dual Voltage
H86 x W86 x D73mm
Pack Qty 1



Dimmable Pull Switch

DIMPULL

Dimmable Pull Switch

Comes complete with a choice of White & Chrome covers,
Leading edge dimming

**Now Suitable to work
with LED Lighting**



Pull Cord Switch

✓ 1 Year Guarantee

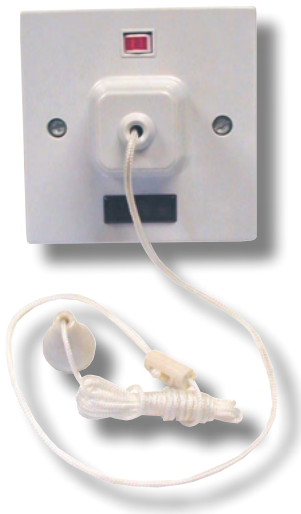


TECHNICAL INFORMATION	
Product Finish	White
Dimensions	83mm Dia
Weight	95g
Barcode	5012739619823
Wattage	1380W
Pack Qty	10
Max operating current	6A, 2 way
Main housing material	Urea
Certification & Conformity	BS EN 60669-1
Guarantee	1 Year

GB2641
Pull Cord Switch
6A, 2 Way
Pack Qty 10

45-A DP Switch with neon

✓ 1 Year Guarantee



TECHNICAL INFORMATION	
Product Finish	White
Dimensions	86mm x 86mm
Weight	197g
Barcode	5012739619687
Wattage	10350W
Pack Qty	10
Max operating current	45A, DP
Main housing material	Urea
Certification & Conformity	BS EN 60669-1
Guarantee	1 Year

GB2319
45A DP Switch with neon
Uses GB2667 Pattress
Pack Qty 10

This range of Socket Converters are an ideal way of gaining extra sockets the GB122W-C converts a single socket into a twin, and the GB223W-C converts a twin socket into a triple.

✓ **1 Year Guarantee**

TECHNICAL INFORMATION	
Conforms to	BS 1363

1 to 2 Socket Converter

GB122W

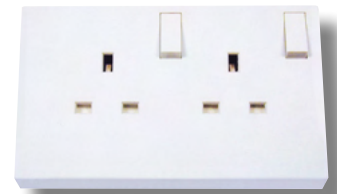
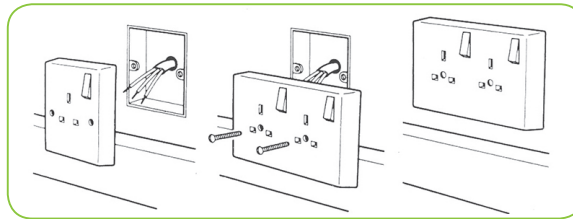
Box Packed

1 to 2 Socket Converter

Converts a single socket to a twin

Replaces existing single socket

Pack Qty 5



2 to 3 Socket Converter

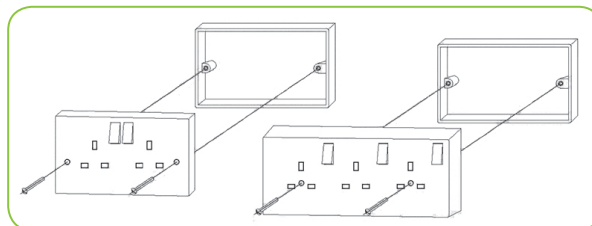
GB223W-C

2 to 3 Socket Converter

Converts a Twin Socket to a triple Socket

Clam Packed

Pack Qty 5



4 Gang Extension Lead

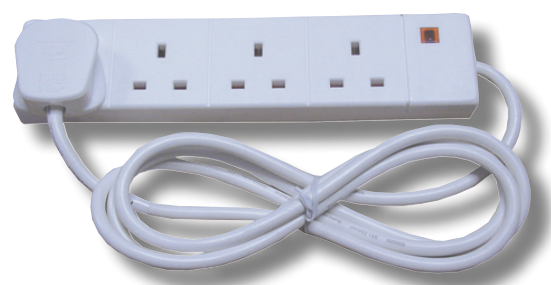
1119

13A, 4 Gang Extension Lead with neon power-on Indicator

1.6M cable

Poly bag packed

Pack Qty 1



Plug Tops

- ✓ Solid brass pins
- ✓ Screw down cable clamp
- ✓ Tough nylon construction
- ✓ 1 Year Guarantee

TECHNICAL INFORMATION

Conforms to

BS 1363



PT13WN
13A Plug Top

White
Pack Qty 20



PT13BN
13A Plug Top

Black
Pack Qty 20



PT13W-5AN
13A Plug Top

Supplied with a 5A Fuse
White
Pack Qty 20



PT13B-5AN
13A Plug Top

Supplied with a 5A Fuse
Black
Pack Qty 20



PT13W-3AN
13A Plug Top

Supplied with a 3A Fuse
White
Pack Qty 20



PT13B-3AN
13A Plug Top

Supplied with a 3A Fuse
Black
Pack Qty 20

Fuses



2AF	2A
3AF	3A
5AF	5A
7AF	7A
10AF	10A
13AF	13A

Cartridge Fuses with ceramic body
1" long
Conforms to BS 1362
Pack Qty 100

- ✓ Available in 1 and 2 gang
- ✓ 1 Year Guarantee

TECHNICAL INFORMATION

Conforms to

BS 1363

2 Gang Trailing Socket

TS2W

Trailing Socket - Rubber

2 Gang

White

Pack Qty 10

TS2B

Trailing Socket - Rubber

2 Gang

Black

Pack Qty 10



1 Gang Trailing Socket

TS1W

Trailing Socket - Rubber

1 Gang

White

Pack Qty 10

TS1B

Trailing Socket - Rubber

1 Gang

Black

Pack Qty 10



Euro & Schuko Converter Plugs

The Europlug converts 2.5A Europlug and German Schuko to 13A BS type.

The Europlug clips into the 13A Euro converter plug terminals quickly and securely making life easier for UK consumers or importers buying standard electrical equipment abroad.

There is a choice of **Non Returnable** (tamper-proof) this refers to the screws used to secure the plug cover.

- A non returnable screw can only be screwed in once and will not undo for security/safety purposes.

Or **Returnable**

- A returnable screw can be screwed and unscrewed as many times as required.

✓ **1 Year Guarantee**

TECHNICAL INFORMATION	
Conforms to	BS 1363, BS 5733



ECP-WNR-3A
3A Non Returnable
White
Pack Qty 1



ECP-BNR-3A
3A Non Returnable
Black
Pack Qty 1



ECP-BNR-5A
5A Non Returnable
Black
Pack Qty 1



ECP-WR-3A
3A Returnable
White
Pack Qty 1



ECP-BR-5A
5A Returnable
Black
Pack Qty 1



SCP-B-10A
Schuko Converter Plug 10A
Non earth converter
Black
Pack Qty 1



SCP-B-13A
Schuko Converter Plug
13A
Black
Pack Qty 1



IP65 Rotary Isolators

- ✓ Red padlock control on yellow flange
- ✓ Cable knock-outs for ease of installation
- ✓ Interlocking lid ensures removal in 'OFF' position only
- ✓ Handles can be padlocked
- ✓ Easy access & switch removal
- ✓ Flame retardant material
- ✓ 1 Year Guarantee

TECHNICAL INFORMATION

IP Rating	IP65
RoHS Compliant	
Conforms to	EN 60947-3

ROT3P16A

3 Pole, 16A, 440V ~

125 x 100 x 86mm (Depth inc handle 120mm)

Pack Qty 1

ROT4P16A

4 Pole, 16A, 440V ~

125 x 100 x 86mm (Depth inc handle 120mm)

Pack Qty 1

ROT3P32A

3 Pole, 32A, 440V ~

125 x 100 x 86mm (Depth inc handle 120mm)

Pack Qty 1

ROT4P32A

4 Pole, 32A, 440V ~

125 x 100 x 86mm (Depth inc handle 120mm)

Pack Qty 1

ROT3P63A

3 Pole, 63A, 440V ~

175 x 115 x 100mm (Depth inc handle 135mm)

Pack Qty 1

ROT4P63A

4 Pole, 63A, 440V ~

175 x 115 x 100mm (Depth inc handle 135mm)

Pack Qty 1



Cable Reels

✓ 1 Year Guarantee

TECHNICAL INFORMATION

Conforms to

BS 1363



CRD25N

13A, 25M Drum Cable Reel - 2 Socket Outlets

230V AC

240 Dia x D145mm

Pack Qty 1

CRD50N

13A, 50M Drum Cable Reel - 4 Socket Outlets

230V AC

280 Dia x D165mm

Pack Qty 1



8633

16A, 25M Drum Cable Reel - 2 Socket Outlets

110V AC

245 Dia x D190mm

Pack Qty 1



8644

16A, 50M Drum Cable Reel - 2 Socket Outlets

110V AC

280 Dia x D220mm

Pack Qty 1

The Wired Doorchime Range, whether battery or transformer powered, has been specifically designed to complement all types of decor, whilst being simple and easy to install.

The chime receivers on models DH020A-C and DH021A-C are connected to the bell push / transmitter via bell wire, they are not mains power and therefore require 3 x C cell LR14 batteries or a bell chime transformer to operate.

- ✓ **Clear sound**
- ✓ **Classic wired chime**
- ✓ **Traditional ding dong sound**
- ✓ **1 Year Guarantee**

Mains Powered Wired Doorchime Kit

DHT01AN-C

'Embassy'

230V AC 50Hz

Low Tone 78dBA / High Tone 83dBA

Complete with integral transformer & bell push
(Bell wire not supplied)

Not suitable for use with illuminated bell pushes

H170 x W105 x D48mm



Battery Powered Wired Doorchimes

DH020A-C

'Galaxy'

78dBA

Battery or 8V Transformer Operation

Requires 3 x C cell LR14 batteries

H170 x W112 x D52mm

DH021A-C

'Tubular'

78dBA

Battery or 8V Transformer Operation

Requires 3 x C cell LR14 batteries

H170 x W112 x D52mm



Bell Transformers

DAT01A

1A Bell Chime Transformer

Double insulated

4/8/12 V AC output, 1A secondary output

1A, double insulated bell & chime transformer. It is 230V AC primary

H76 x W54 x D41mm

Conforms to BSEN 61558-2-8



DAT02A

1A DIN Rail Mounted Bell Chime Transformer

Double insulated

4/8/12 V AC output, 1A secondary output

Double insulated bell & chime transformer

DIN Rail mounted

H91 x W36 x D65mm

Conforms to BSEN 61558-2-8



DAT03A

2A DIN Rail Mounted Bell Chime Transformer

4/8/12 V AC output, 2A secondary outputs

Triple module DIN Rail mounting

Can be surface mounted

2A double insulated bell & chime transformer with fully segregated primary and secondary connections. It is 230V primary

H91 x W53 x D65mm

Conforms to BSEN 61558-2-8



Bell Pushes

Use these bell pushes with any wired doorchime by connecting with bell wire. These pushes can also be used with a majority of wireless doorchimes.

- ✓ **Illuminated bell pushes DPL03A-C & DPL04A-C can only be used with wired doorchime DH020A-C and DH021A-C**
- ✓ **1 Year Guarantee**



	DP010A-C	DP020A-C	DP220A-C	DPL03A-C	DPL04A-C
Product Finish	Black	White	White	Black	White
Description	Black body White button	White body Black button	White body white button with Black outline	Black body White button Illuminating button (Only compatible with wired door- chimes DH020A-C & DH021A-C)	White body White buttons Illuminating button (Only compatible with wired door- chimes DH020A-C & DH021A-C)
Product Dimensions	H60 x W30 x D20mm	H60 x W30 x D20mm	H52 x W22 x D15mm	H60 X W30 X D20mm	H60 x W30 x D20mm
Guarantee	1 Year				

Fused Timer Connection Unit - 7 Day

Ideal for control of heated towel rails, panel heaters, immersion heaters, fan heaters & lighting systems (including LED lighting).

- ✓ Energy saving
- ✓ Large backlit LCD display
- ✓ Easy to program
- ✓ '2 Hour Boost' & 'Advance' controls
- ✓ 1 Year Guarantee
- ✓ 28 ON and OFF settings
- ✓ Easy set - Day / 5 Day / 7 Day blocks
- ✓ Surface/flush mounting
- ✓ 700 hours battery life
- ✓ Front cable entry



TECHNICAL INFORMATION

Voltage	230V ~ 50Hz
Rated Impulse Voltage	4,000V
Pollution Degree	2
Operation	Integrated Control
Display	LCD
Operating Temp	-5°C to +40°C
Max Load	13A Resistive, 6A Inductive
Main Switch	Double Pole Switch
Conforms to	BS 5733, BS EN 60730-1, BS EN IEC 60730-2-7

T205

Fused Timer Connection Unit Switch - 7 Day 'Boost' & 'Advance' controls

Slim design

Will fit 25-47mm back boxes

86.5 x 86.5 x 40mm (46.5mm including switch on front)

**7 Day Timer with
1 & 2 HR Boost Function**

- ✓ Ideal for most heating applications
- ✓ Timer 'on' status indicator
- ✓ Fits a 35mm dual appliance socket box should you require to mount the timer next to a fused spur or socket outlet
- ✓ Will fit directly to any 35mm deep socket box fitted with an earth terminal
- ✓ Suitable for use with our PENC1G IP66 Weatherproof Single Enclosure
- ✓ T108A is suitable for discharge lighting applications
- ✓ 1 Year Guarantee

TECHNICAL INFORMATION	
Voltage	230V AC
Max Load	1.6A Resistive load 2A Inductive load (T108A-C 8A Inductive load)
Conforms to	BS EN 60730-1:2016 +A1:2019 and BS EN IEC 60730-2-7:2020

Mechanical Timers

T100A

24hr Mechanical Timer

96 on/off settings
Analogue clock face
on/timed/off switch selector
H77 x W72 x D43mm (Plate 86 x 86mm)



T101A

7 Day Mechanical Timer

84 on/off settings (12 per day)
Analogue clock face
on/timed/off switch selector
Minute hand indicator
H77 x W72 x D43mm (Plate 86 x 86mm)



T105A

7 Day Electronic Timer with 150hr battery backup

24 on/off programmes
Manual Override
Summer time setting option
Countdown timer function and 'Random' setting
Battery Back Up 150 Hours
H77 x W72 x D43mm (Plate 86 x 86mm)



T108A

7 Day Electronic Timer with 150hr battery backup

8A inductive rating
24 on/off programmes
Manual override
Summer time setting option and 'Random' setting
Battery Back Up 150 Hours
H77 x W72 x D43mm (Plate 86 x 86mm)



Electronic Timers

- ✓ Timer 'on' status indicator
- ✓ 1 Year Guarantee

TECHNICAL INFORMATION

Voltage	230V ~ 50Hz
Max Load	16A Resistive, 2A Inductive
Conforms to	BS EN 60730-1:2016 +A1:2019 and BS EN IEC 60730-2-7:2020

Mechanical Timers



T102A

24hr Mechanical Timer

96 on/off settings
Analogue clock-face
On/timed/off switch selector
H127 x W74 x D48mm

T104A

7 Day Mechanical Timer

84 on/off settings (12 per day)
Analogue clock-face
On/timed/off switch selector
Minute hand indicator
H127 x W74 x D48mm

Electronic Timer



T106A

7 Day/24hr Electronic Timer with 150hr battery backup

24 on/off programmes
Manual override
Summer time setting
Countdown timer function and 'Random' setting
H127 x W74 x D48mm

Electronic Timer



T109

16A Dual Tariff Boost Timer

The GreenBrook Dual Tariff Boost Timer controls the use of off-peak cheap rate electricity. It can be surface mounted and has easy to set time segments.
15 - 120 minute boost facility
Anti-tamper time cover
H85 x W155 x D50mm

- ✓ **Manual override**
- ✓ **1 Year Guarantee**

TECHNICAL INFORMATION	
Voltage	230V ~ 50Hz, 13A
Max Load	(3kW) Resistive, 2A Inductive
Conforms to	BS EN 60730-1:2016 +A1:2019 and BS EN IEC 60730-2-7:2020

T17B

7 Day Electronic Plug-In Timer/Adaptor

- 24 on/off programmes
- Random delay 'on/off' function
- Timer countdown function
- Complete with AAA battery to keep programmed settings when not plugged in
- Summertime pre-set setting available
- H123 x W64 x D53mm (exl. pins)

Electronic Plug-In



Mechanical Plug-In

T73A

24hr Mechanical Plug-In Timer/Adaptor

- 15 minute on/off segments
- H131 x W76 x D46mm (exl.pins)



Wall Switch Timer - 7 Day

Simply replaces a standard wall switch to provide timed switching of lights while still allowing normal switching operation. The hinged cover also operates as a light switch.

- ✓ **Replaces the existing light switch - either 1 way or 2 way circuit**
- ✓ **Daily/Weekly/Weekday/Weekend programmes available**
- ✓ **Will still operate as a manual switch**
- ✓ **1 Year Guarantee**



T40S

Wall Switch Security Timer with 24hr Battery Backup

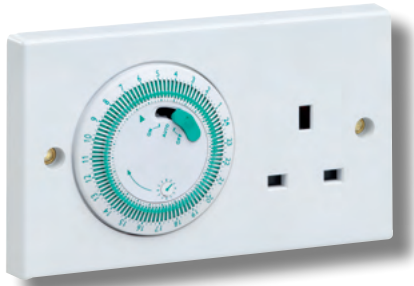
- 6 on/off programmes per day
- 7 Day or 24hr Programming available
- H86 x W86 x D27mm

**Suitable for use
with LED Lighting**

Timer Socket

The GreenBrook 24hr Mechanical Timer Socket simply replaces your normal socket, with the added benefit of a timer application. It has 96 on/off settings for maximum flexibility. Suitable for use with any 13A appliance you need to automatically control.

- ✓ On/timed/off selector
- ✓ Power consumption 0.9W
- ✓ Operation temperature -5°C to +40°C
- ✓ Can be installed into IP66 Weatherproof Twin Enclosure PENC2G
- ✓ 1 Year Guarantee



TS70A
24hr Mechanical 13A Timer Socket

96 on/off settings
Operates with 15 minute on/off segments
H87 x W147 x D14mm

TECHNICAL INFORMATION

Voltage	230V ~ 50Hz, 13 Amp
Max Load	4A Inductive
Conforms to	BS 1363-2, BS EN 60730, BS EN 60730-2-7

Din Rail Mounting Timer

- ✓ For use with control panels
- ✓ Volt free contact
- ✓ 6 ON + 6 OFF settings
- ✓ Din rail mounted
- ✓ 100 hour battery back up
- ✓ 1 Year Guarantee



T80
Din Rail Mounting Digital Compact Timer

With 7 day or 24hr programming
H90 x W18 x D55mm

TECHNICAL INFORMATION

Voltage	230V AC ~ 50/60Hz
Max Load	16A Resistive, 2A Inductive
Conforms to	BS EN 60730-1 and BS EN IEC 60730-2-7

Pneumatic Time Delay Switch

For the operation and control of lighting.

- ✓ Suitable for controlling GLS, fluorescent and compact fluorescent lighting
- ✓ Adjustable time delay from 10 seconds to 10 minutes
- ✓ 1 Year Guarantee



TLSN
Pneumatic Time Delay Switch

H85 x W85 x D42mm
Weight 82.5g

TECHNICAL INFORMATION

Voltage	230V AC ~ 50Hz
GLS Load	6A, 1440 watts
Fluorescent Load	3A, 720 watts
Contacts	Normally open
Conforms to	BS EN 60730-2-7

Mechanical Thermostats

Our range of Mechanical Thermostats also includes two froststats and a cylinder/pipe stat. These Mechanical Thermostats are easy to install and have an IP rating of IP20.

✓ **1 Year Guarantee**

TECHNICAL INFORMATION	
Voltage	230V AC resistive load
IP Rating	IP20
Class	Class II
Type of operation	3 wire operation
Conforms to	BS EN 60730-1, BS EN 60730-2-7

TH90

Thermostat - Break on Rise

Resistive 10A opening
+5°C to +35°C
H83 x W83 x D34mm



TH90C

Thermostat - Changeover Contact

Resistive 10A opening, 3A closing
+5°C to +35°C
H83 x W83 x D34mm



TH90T

Thermostat Tamper-proof - Changeover Contact

Resistive 10A opening, 3A closing
+5°C to +35°C
H83 x W83 x D34mm



TH90F

Froststat - Break on rise

For frost protection of building fabric, contents and exposed pipework
Resistive 10A opening
-5°C to +15°C
H83 x W83 x D34mm



TH90FT

Froststat Tamperproof

For frost protection of building fabric, contents and exposed pipework
Resistive 10A opening
-5°C to +15°C
H83 x W83 x D34mm



TH90CS

Cylinder/Pipe Stat Changeover Contact Control for boilers and central heating

Resistive 15A opening
+10°C to +90°C
H120 x W40 x D40mm



ORION RANGE

Infra-Red Motion Detector - OD100

These products uses an Infra-Red heat detector.
The detector senses 'warmth movement' in the surrounding area when it is dark.
When movement is detected the sensor is activated and triggers the connected load.
It has a built in photo-cell that can identify day and night.

- ✓ Suitable for LED and energy saving lamps
- ✓ Detection range 160°
- ✓ Adjustable time delay & ambient light
- ✓ Built in replaceable fuse
- ✓ PIR motion sensor
- ✓ No neutral required
- ✓ Replaces existing light switch
- ✓ Fits a standard 25mm back box
- ✓ Suitable for wall mounting only
- ✓ 1 Year Guarantee

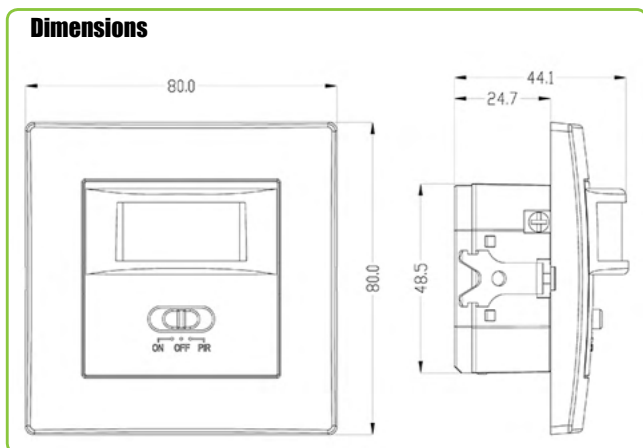
**Suitable for LED
Lamps**



**OD100
Wall Switch Sensor**
96 on/off settings
Weight 71g
H79.5 x W79.5 x D44.4mm

TECHNICAL INFORMATION	
Voltage	230V AC ~ 50Hz
IP Rating	IP20
Ambient Light	<3-2,000 LUX (adj)
Time Delay	Min 10 sec ± 3 sec, Max 7 min ± 2 min
Rated Load	0W - 500W Tungsten, 5W - 200W Energy Saving/LED
Detection Distance	9M max (<24°C)
Detection Range	160°C
Working Humidity	<93%RH
Working Temp	-20°C - +40°C
Power Consumption	0.5W approx
Installation Height	1 - 1.8M
Detection Moving Speed	0.6 - 1.5m/s
Fuse Type	3A, 20mm x 5mm
Dimensions	80 x 80 x 44.1mm

**LEDs
up-to
200W**



Fits standard 25mm back box

Detection
range 160°



9M Detection
Distance

ORION RANGE

Infra-Red Motion Detector - OD101

These products use an Infra-Red detector.

The detector senses 'warmth movement' in the surrounding area when it is dark. When movement is detected the sensor is activated and triggers the connected load. It has a built in photo-cell that can identify day and night.

- ✓ Adjustable time delay
- ✓ Working Temp -20°C - +40°C
- ✓ Power consumption 0.5W approx
- ✓ Adjustable ambient light
- ✓ Suitable for LED and energy saving lamps
- ✓ Detection range 360°
- ✓ PIR motion sensor
- ✓ Surface mounted, no cut-out required
- ✓ 1 Year Guarantee

OD101

Slimline Ceiling Sensor

Weight 104g

Diameter 115 x D24mm

LEDs
up-to
1000W



Suitable for LED Lamps

TECHNICAL INFORMATION	
Voltage	230V AC ~ 50Hz
IP Rating	IP20
Ambient Light	<3-2,000 LUX (adj)
Time Delay	Min 10 sec ± 3 sec, Max 15 min ± 2 min
Rated Load	2000W Tungsten, 1000W Energy Saving/LED
Detection Distance	6M max (<24°C)
Working Humidity	<93%RH
Installation Height	2.2 - 4M
Detection Moving Speed	0.6 - 1.5m/s
Fuse Type	3A, 20mm x 5mm
Conforms to	EN 60669-1, EN 60669-2-1, EN 55015, EN 61000-3-2, EN 61000-3-3, EN 61547

Infra-Red Motion Detector - OD102

- ✓ Adjustable time delay
- ✓ Working Temp -20°C - +40°C
- ✓ Power consumption 0.5W approx
- ✓ Adjustable ambient light
- ✓ Suitable for LED and energy saving lamps
- ✓ Detection range 360°
- ✓ PIR motion sensor
- ✓ Surface mounted, no cut-out required
- ✓ 1 Year Guarantee

OD102

Ceiling Mounted Sensor

Weight 86g

Diameter 80 x D42mm

LEDs
up-to
300W



Suitable for LED Lamps

TECHNICAL INFORMATION	
Voltage	230V AC ~ 50Hz
IP Rating	IP20
Ambient Light	<3-2,000 LUX (adj)
Time Delay	Min 10 sec ± 3 sec, Max 15 min ± 2 min
Rated Load	1200W Tungsten, 300W Energy Saving/LED
Detection Distance	6M max (<24°C)
Working Humidity	<93%RH
Installation Height	2.2 - 4M
Detection Moving Speed	0.6 - 1.5m/s
Fuse Type	3A, 20mm x 5mm
Conforms to	EN 61058-1, EN 55015, EN 61000-3-2, EN 61000-3-3, EN 61547

ORION RANGE

Infra-Red Motion Detector - OD103 (White) & OD103B (Black)

- ✓ Detection range 180°
- ✓ PIR motion sensor
- ✓ Adjustable ambient light
- ✓ Multi directional head
- ✓ Suitable for indoor and outdoor use
- ✓ Power consumption 0.5W
- ✓ 1 Year Guarantee

**Suitable for LED
Lamps**



**LEDs
up-to
300W**



TECHNICAL INFORMATION	
Voltage	230V AC ~ 50Hz
IP Rating	IP65
Ambient Light	<3-2,000 LUX (adj)
Time Delay	Min 10 sec ± 3 sec, Max 15 min ± 2 min
Rated Load	1200W Tungsten, 300W Energy Saving/LED
Detection Distance	12M max (<24°C)
Working Humidity	<93%RH
Installation Height	1.8 - 2.3M
Detection Moving Speed	0.6 - 1.5m/s
Conforms to	EN 61058-1, EN 55015, EN 61000-3-2, EN 61000-3-3, EN 61547

**OD103
IP65 Infra-red Detector**

White
Weight 159g
H51 x W88 x D120mm

**OD103B
IP65 Infra-red Detector**

Black
Weight 159g
H51 x W88 x D120mm

“High IP rating for severe weather conditions”



“Suitable for indoor and outdoor use”

ORION RANGE

Infra-Red Motion Detector - OD104

These products use an Infra-Red heat detector. The detector senses 'warmth movement' in the surrounding area when it is dark, when movement is detected the sensor is activated and triggers the connected lead. It has a built in photo-cell that can identify day and night.

- ✓ Adjustable time delay
- ✓ Power consumption 0.5W approx
- ✓ Suitable for LED and energy saving lamps
- ✓ Detection range 180°
- ✓ PIR motion sensor
- ✓ Adjustable ambient light
- ✓ Multi directional head
- ✓ Suitable for indoor and outdoor use
- ✓ 1 Year Guarantee

LEDs
up-to
400W

OD104 Infra-Red Motion Detector

Weight 97g
80.2 x 55.5 x 66.5mm



TECHNICAL INFORMATION	
Voltage	230V AC ~ 50Hz
IP Rating	IP44
Ambient Light	<3-2,000 LUX (adj)
Time Delay	Min 10 sec ± 3 sec, Max 15 min ± 2 min
Rated Load	800W Tungsten, 400W Energy Saving/LED
Detection Distance	12M max (<24°C)
Working Humidity	<93%RH
Installation Height	1.8 - 2.5M
Detection Moving Speed	0.6 - 1.5m/s
Conforms to	EN 60669-1, EN 60669-1, EN 55015, EN 61000-3-2, EN 61000-3-3, EN 61547

Infra-Red Motion Detector - OD105

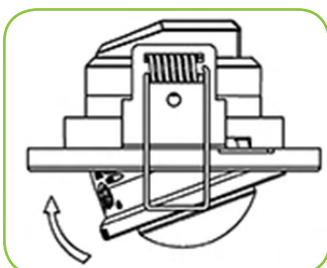
- ✓ Suitable for LED and energy saving lamps
- ✓ Detection range 360°
- ✓ Adjustable time delay
- ✓ PIR motion sensor
- ✓ Adjustable ambient light
- ✓ Hole cut out 65mm
- ✓ Tilt facility for easy adjustment
- ✓ 1 Year Guarantee

LEDs
up-to
400W

OD105 Flush Mounted Ceiling Detector

Weight 95g
Diameter 60 x D80mm

TECHNICAL INFORMATION	
Voltage	230V AC ~ 50Hz
IP Rating	IP20
Ambient Light	<3-2,000 LUX (adj)
Time Delay	Min 10 sec ± 3 sec, Max 15 min ± 2 min
Rated Load	800W Tungsten, 400W Energy Saving/LED
Detection Distance	6M max (<24°C)
Working Humidity	<93%RH
Installation Height	2.2 - 4M
Detection Moving Speed	0.6 - 1.5m/s
Conforms to	EN 60669-1, EN 60669-2-1, EN 55015, EN 61000-3-2, EN 61000-3-3, EN 61547



"Tilt facility for
easy adjustment"

ORION RANGE

Infra-Red Presence Detector - ODPS300

The ODPS300 functions as per the infra-red motion detectors however a 'Presence detector' has additional detectors built in which increases the devices sensitivity to small movements, for example sitting at a desk typing, keeps the trigger load running.

- ✓ Adjustable time delay
- ✓ Working Temp -20° - +40°C
- ✓ Power consumption 0.5W approx
- ✓ Suitable for LED and energy saving lamps
- ✓ Detection range 360°
- ✓ PIR motion sensor
- ✓ Adjustable ambient light
- ✓ 1 Year Guarantee

**Suitable for LED
Lamps**

TECHNICAL INFORMATION

Voltage	230V AC ~ 50Hz
IP Rating	IP20
Ambient Light	<3-2,000 LUX (adj)
Time Delay	Min 10 sec ± 3 sec, Max 30 min ± 2 min
Rated Load	2000W Tungsten, 1000W Energy Saving/LED
Detection Distance	20M max (<24°C)
Working Humidity	<93%RH
Installation Height	2.2 - 6M
Conforms to	EN 61058-1, EN 55015, EN 61000-3-2, EN 61000-3-3, EN 61547

**LEDs
up-to
1000W**

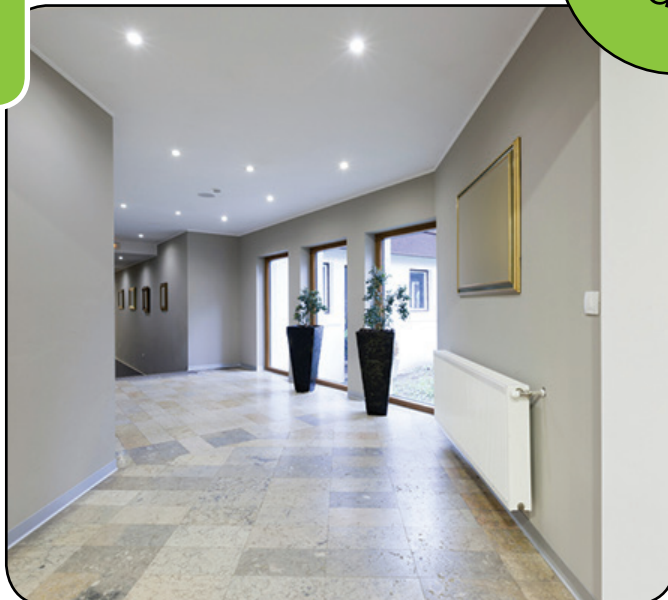


**ODPS300
Infra-Red Presence Detector**

Weight 140g
H60 x W102 x D102mm

Infra-Red Presence Detectors function as per the infra-red motion detectors however a presence detector has additional detectors built in which increases the device sensitivity to small movements for example sitting at a desk typing, keeps the trigger load running.

**Energy
Saving
products**



"360 Detection Range"

ORION RANGE

Microwave Presence Detector - ODM200

A detector monitors the detection zone for occupancy, using radio waves in the microwave band (5.8 GHz) if a person is sensed then the detector will automatically turn the lighting on. When the area is vacated, the light will turn off after a pre-set time delay.

Most of our microwave detectors have a built in light level (LUX) sensor which will keep the lighting off if there is enough natural light available.

- ✓ **Adjustable time delay**
- ✓ **Suitable for LED and energy saving lamps**
- ✓ **Detection range 360°**
- ✓ **Hole cut out 65mm**
- ✓ **Power consumption 0.9W**
- ✓ **Microwave sensor**
- ✓ **Adjustable ambient light**
- ✓ **1 Year Guarantee**

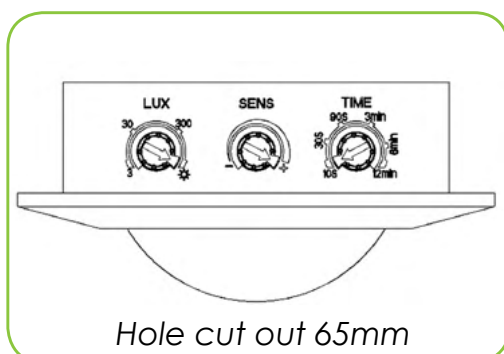
Suitable for LED Lamps

TECHNICAL INFORMATION	
Voltage	230V AC ~ 50Hz
IP Rating	IP20
Ambient Light	<3-2,000 LUX (adj)
Time Delay	Min 10 sec ± 3 sec, Max 12 min ± 1 min
Rated Load	1200W Tungsten, 300W Energy Saving/LED
Detection Distance	1.8M max adjustable
Working Humidity	<93%RH
Installation Height	1.5 - 3.5M
Detection Moving Speed	0.6 - 1.5m/s
Conforms to	EN 61058-1, EN 55015, EN 61000-3-2, EN 61000-3-3, EN 61547

A microwave presence detector monitors the detection zone for occupancy, using radio waves in the microwave band (5.8 GHz) if a person is sensed then the detector will automatically turn the lighting on. When the area is vacated, the light will turn off after a pre-set time delay. Most of our microwave detectors have a built in light level (Lux) sensor which will keep the lighting off if there is enough natural light available.

ODM200 Ceiling Mounted Presence Detector

Weight 99g
Dia 74 x D76mm



ORION RANGE

Microwave Presence Detector - ODM201

Our range of Microwave Presence Detectors are designed to reduce the amount of time lighting is left on unnecessarily, for example if an area is unoccupied or if there is sufficient natural light. Controlling lighting with a microwave presence detector can **save up to 60%** of lighting energy costs dependent on occupancy behaviour and the amount of natural light available: our microwave sensors can also be used to control heating and ventilation. *As this detector uses microwaves, detection is possible through internal door panes of glass or thin walls.*

- ✓ Adjustable time delay
- ✓ Suitable for LED and energy saving lamps
- ✓ Power consumption 0.9W approx
- ✓ Microwave sensor
- ✓ Detection range 360° (ceiling)
- ✓ Detection range 180° (wall)
- ✓ Adjustable ambient light
- ✓ Suitable for incorporation into light fittings
- ✓ 1 Year Guarantee

**Suitable for LED
Lamps**

**LEDs
up-to
300W**

TECHNICAL INFORMATION

Voltage	230V AC ~ 50Hz
IP Rating	IP20
Ambient Light	<3-2,000 LUX (adj)
HF System	5.8GHz CW radar, ISM band
Time Delay	Min 10 sec ± 3 sec, Max 12 min ± 1 min
Rated Voltage	1200W Tungsten, 300W Energy Saving/LED
Detection Distance	5 - 15M max adjustable (wall) 1 - 8M radius adjustable (ceiling)
Working Humidity	<93%RH
Installation Height	1.5 - 3.5M (wall) 2 - 8M (ceiling)
Detection moving speed	0.6 - 1.5m/s
Conforms to	EN 60669-1, EN 60669-2-1, EN 55015, EN 61000-3-2, EN 61000-3-3, EN 61547

“Suitable for incorporation into light fittings”



**ODM201
Adjustable Presence Detector**

Weight 43g
H25.4 x W39.4 x D54.6mm

ORION RANGE

Microwave Presence Detector - ODM202

As this detector uses microwaves, detection is possible through internal door panes of glass or thin walls.

- ✓ Adjustable time delay
- ✓ Suitable for LED and energy saving lamps
- ✓ Power consumption 0.9W approx
- ✓ Microwave sensor
- ✓ Detection range 360° (ceiling)
- ✓ Adjustable ambient light
- ✓ Detection range 180° (wall)
- ✓ Suitable for incorporation into light fittings
- ✓ 1 Year Guarantee

Suitable for LED Lamps



ODM202
Programmed Settings Presence Detector

Weight 46g
H25.4 x W37 x D64mm

TECHNICAL INFORMATION	
Voltage	230V AC ~ 50Hz
IP Rating	IP20
Ambient Light	2 LUX, 5 LUX, 20 LUX, 50 LUX, 2,000 LUX (choice)
HF System	5.8GHz CW radar, ISM band
Hold Time	5s, 30s, 1min, 5min, 10 min, 20min, 30min (choice)
Rated Load	1200W Tungsten, 300W Energy Saving/LED
Detection Distance	5 - 15M max adjustable (wall) 1 - 8M radius adjustable (ceiling)
Working Humidity	<93%RH
Installation Height	1.5 - 3.5M (wall) 2 - 8M (ceiling)
Detection Moving Speed	0.6 - 1.5m/s
Conforms to	EN 60669-1, EN 60669-2-1, EN 55015, EN 61000-3-2, EN 61000-3-3, EN 61547

Microwave Presence Detector - ODM203

- ✓ Adjustable time delay
- ✓ Suitable for LED and energy saving lamps
- ✓ Power consumption 0.9W approx
- ✓ Microwave sensor
- ✓ Detection range 360° (ceiling)
- ✓ Adjustable ambient light
- ✓ Detection range 180° (wall)
- ✓ Suitable for incorporation into light fittings
- ✓ More controllable fully dimmable
- ✓ 1 Year Guarantee

Suitable for LED Lamps



ODM203
1 -10V Dimmable Presence Detector

Weight 62g
H26 x W45 x D78mm

TECHNICAL INFORMATION	
Voltage	230V AC ~ 50Hz
IP Rating	IP20
Ambient Light	2 LUX, 5 LUX, 20 LUX, 50 LUX, 2,000 LUX (choice)
HF System	5.8GHz CW radar, ISM band
Hold Time	5s, 30s, 1min, 5min, 10min, 20min, 30min
Rated Load	1200W Tungsten 300W Energy Saving/LED
Detection Distance	5 - 15M max adjustable (wall) 1 - 8M radius adjustable (ceiling)
Working Humidity	<93%RH
Installation Height	1.5 - 3.5M (wall) 2 - 8M (ceiling)
Detection Moving Speed	0.6 - 1.5m/s
Stand-by Dimming Level	10%, 20%, 30%, 50% (choice)
Conforms to	EN 60669-1, EN 60669-2-1, EN 55015, EN 61000-3-2, EN 61000-3-3, EN 61547

ORION RANGE

The GreenBrook Photocell range offers a wide selection of products for dusk and dawn switching. A photocell detects the level of light and will turn lights on when it gets dark.

✓ **1 Year Guarantee**

A maximum of 10 LED fittings can be used per photocell sensor

TECHNICAL INFORMATION	
Voltage	230V AC ~ 50Hz
IP Rating	PEC1000 IP65, PEC5000 IP65, PEC4000-C IP44, PEC20 IP65 (when fitted) PECR IP65 (when fitted)
Conforms to	EN60669-2-1

PEC1000

2000W/10A Electronic Photocell Kit with detachable sensing module

ON < 20 - OFF > 80 LUX
Max switching capacity 10A
Max load 2000W tungsten / 2 x 400W HPS / 400W LED Load
10 - 15 second switching delay

PECH

Replacement head for PEC1000

Max switching capacity 10A
Max load 2000W tungsten / 2 x 400W HPS / 400W LED Load
10 - 15 second switching delay

PEC500

1000W/5A Electronic Photocell Kit with detachable sensing module

ON < 20 - OFF > 80 LUX
Max switching capacity 5A
Max load 1000W tungsten / 2 x 240W HPS / 400W LED load
10-15 second switching delay

PECH500

Replacement head for PEC500

Max switching capacity 5A
Max load 1000W tungsten / 2 x 240W HPS / 400W LED Load
10-15 second switching delay

PEC20

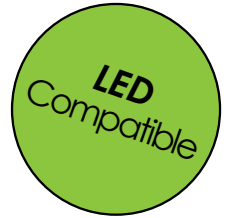
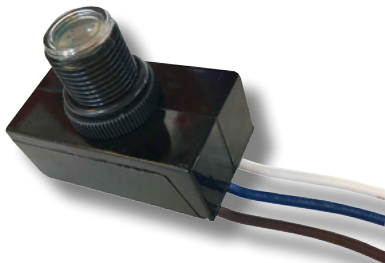
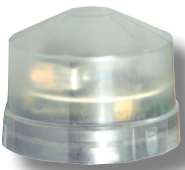
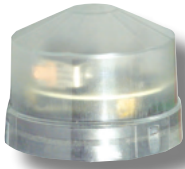
2000W/10A Remote Panel Mounting Photocell

ON < 20 - OFF > LUX
Max switching capacity 10A
Max load 2000W tungsten / 2 x 400W HPS / 400W LED Load
16mm mounting thread size with lockring

PECR

1000W/4.5A Remote Photocell

10 ~ 20 Lux ON (Dusk)
30 ~ 60 Lux OFF (Dawn)
IP65 Rated (when fitted)
Max switching capacity 4.5A
Max load 1000W tungsten / 400W LED Load
Electrical life 5000 cycles
20mm mounting thread size with lock rings



1800 Watt Hand Dryer

1800 Watt

Stylish, powerful and durable, this automatic 1800 watts ABS Plastic housed hand dryer provides solutions for a number of installations. From domestic to light commercial environments such as guest houses, toilets, kitchens and office environments.

- ✓ Automatic hands free operation
- ✓ Overheat thermal cut out protection
- ✓ Over time safety device/Auto shut off after 1 minute continuous use
- ✓ Adjustable sensor distance 20 +/-5 cm
- ✓ 1 Year Guarantee

TECHNICAL INFORMATION

Voltage	230V AC ~ 50Hz
---------	----------------

HDP1800 1800W Automatic Hand Dryer

Automatic Hand Dryer
ABS PVC External Housing
IPX1 Rated
Double Insulated
H270 x W260 x D180mm



'Ideal for public conveniences in restaurants, public houses, gymnasiums, offices etc'

Air Curtain

The Air Curtain unit is designed for easy installation and can be wall or ceiling mounted. Featuring three air settings: fan only, warm air (1500W) or hot air (3000W), it also includes a mounting bracket so angle can be adjusted.

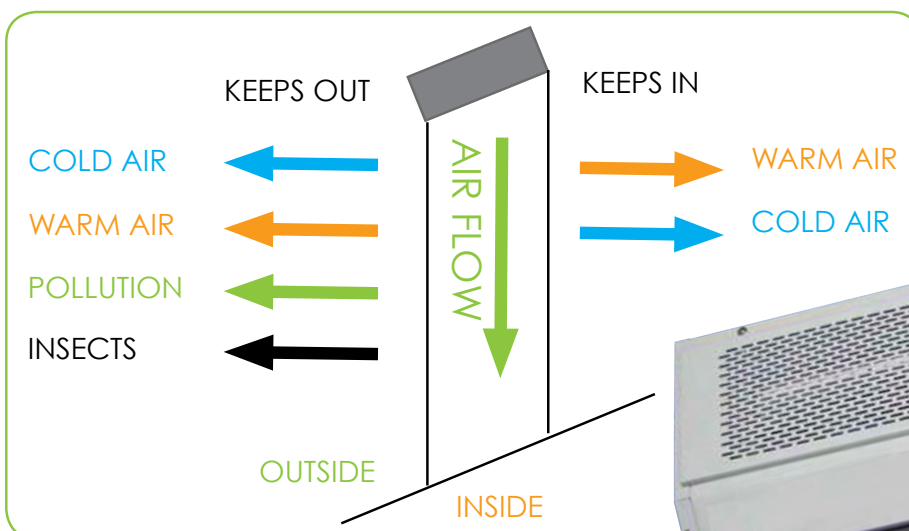
This unit is ideal for providing a heated air curtain if mounted over doorways and reduces draughts and the discomfort of cold air when doors are opened.

- ✓ Fan only / 1500W / 3000W Settings
- ✓ Wall or ceiling mounted
- ✓ Overheat protection
- ✓ Metal case
- ✓ Mounting bracket included
- ✓ 1 Year Guarantee

TECHNICAL INFORMATION

Voltage	230 - 240V AC ~ 50Hz
Class	1
Conforms to	EN 60335-2-30, EN 60335-1 & EN 62233

**Featuring three air settings:
fan only, warm air (1500W)
or hot air (3000W)**



AC3000N - Air Curtain

Two Heat Settings 1.5kW - 3kW
L580 x W205.5 x H104.5mm

Tubular Heaters with Thermostats

Our Tubular Heaters and Guards are designed for wall mounting - Ideal for use in all types of outbuildings. The Thermostat range has built-in adjustable thermostat with a range from 5°C to 40°C.

- ✓ Wall fixings included, cable length 1M
- ✓ Heater fitted with internal thermal cut-out to prevent overheating, will reset as unit cools
- ✓ Guards available to fit all heaters
- ✓ Wide choice of sizes available - 1ft to 6ft
- ✓ 1 Year Guarantee



TECHNICAL INFORMATION

Voltage	230V AC ~ 50Hz
IP Rating	IP44
Conforms to	BS EN 60335

**with Thermostat
Control**

TUBH1TH
60W With Thermostat
1ft
L364mm x 55.4mm

TUBH2TH
120W With Thermostat
2ft
L667mm x 55.4mm

TUBH3TH
180W With Thermostat
3ft
L959mm x 55.4mm

TUBH4TH
240W With Thermostat
4ft
L1276mm x 55.4mm

TUBH5TH
300W With Thermostat
5ft
L1574mm x 55.4mm

TUBH6TH
360W With Thermostat
6ft
L1878mm x 55.4mm



TUBHUB
Thermostat Brackets

Tubular Heaters

Our Tubular Heaters and Guards are designed for wall mounting - Ideal for use in all types of outbuildings.

- ✓ **Wall fixings included, cable length 1M**
- ✓ **Instant start**
- ✓ **Guards available to fit all heaters**
- ✓ **Heater fitted with internal thermal cut-out to prevent overheating, will reset as unit cools**
- ✓ **1 Year Guarantee**

**TUBH1
60W**

Can connect up to 1000W
1ft
L308mm x 55.4mm

**TUBH2
120W**

Can connect up to 1000W
2ft
L612mm x 55.4mm

**TUBH3
180W**

Can connect up to 1000W
3ft
L904mm x 55.4mm

**TUBH4
240W**

Can connect up to 1000W
4ft
L1221mm x 55.4mm

**TUBH5
300W**

Can connect up to 1000W
5ft
L1519mm x 55.4mm

**TUBH6
360W**

Can connect up to 1000W
6ft
L1823mm x 55.4mm



Tubular Guards

Our single Tubular Guards are designed to protect against the heating surface of GreenBrook's Tubular Heaters in environments with young children, elderly people or pets.

- ✓ **Easy to install**
- ✓ **Powder coated, steel construction**
- ✓ **1 Year Guarantee**

TUBG11NN

Tubular Guard to fit TUBH1TH & TUBH1

1ft
L400mm x 190mm
(including fixing holes)

TUBG31NN

Tubular Guard to fit TUBH3TH & TUBH3

3ft
L1000mm x 190mm
(including fixing holes)

TUBG51NN

Tubular Guard to fit TUBH5TH & TUBH5

5ft
L1600mm x 190mm
(including fixing holes)

TUBG21NN

Tubular Guard to fit TUBH2TH & TUBH2

2ft
L700mm x 190mm
(including fixing holes)

TUBG41NN

Tubular Guard to fit TUBH4TH & TUBH4

4ft
L1300mm x 190mm
(including fixing holes)

TUBG61NN

Tubular Guard to fit TUBH6TH & TUBH6

6ft
L1900mm x 190mm
(including fixing holes)

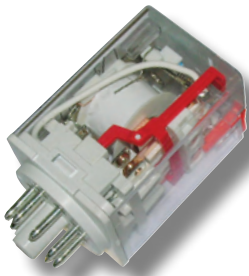


Plug-In Relays and Bases - Round Footprint

Ideal for controlling domestic and light industrial loads including Heaters, Pumps and Motors. These Relays and Bases are industry standard parts and generally suitable replacements for Tyco, Omron and IMO components of similar style.

- ✓ **2 and 3 pole - Round Terminal Footprint**
- ✓ **With LED / flag / button as standard**
- ✓ **For 35mm DIN Rail**

TECHNICAL INFORMATION	
2 Pole	10A (2A Inductive) 250V AC
3 Pole	10A (2A Inductive) 250V AC
IP Rating	IP40
Contact material is silver alloy	
Contact rating	10A 250V AC
AC coil consumption	24V to 230V AC - 1.2VA
DC coil consumption	24V DC - 0.9W
Complies with UL/CSA	



2 Pole changeover relay

Pk Qty 5

H69 x W38 x D36mm

PRR208-24AC 8 Pin, 24V AC

PRR208-24DC 8 Pin, 24V DC

PRR208-115AC 8 Pin, 115V AC

PRR208-230AC 8 Pin, 230V AC

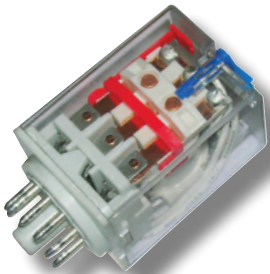


PRRB8

8 Pin DIN Rail base for 2 Pole changeover relay

Pk Qty 10

H26 x W62 x D38mm



3 Pole changeover relay

Pk Qty 5

H69 x W36 x D38mm

PRR311-24AC 11 Pin, 24V AC

PRR311-24DC 11 Pin, 24V DC

PRR311-115AC 11 Pin, 115V AC

PRR311-230AC 11 Pin, 230V AC



PRRB11

11 Pin DIN Rail base for 3 Pole changeover relay

Pk Qty 10

H26 x W62 x D38mm

Plug-In Relays and Bases - Square Footprint

Ideal for controlling domestic and light industrial loads including Heaters, Pumps and Motors. These Relays and Bases are industry standard parts and generally suitable replacements for Tyco, Omron and IMO components of similar style.

- ✓ **2 and 4 - Square Terminal Footprint**
- ✓ **With LED / flag / button as standard**
- ✓ **For 35mm DIN Rail**

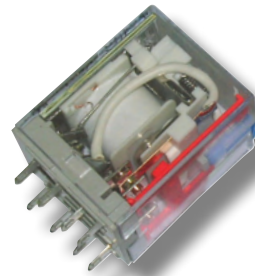
TECHNICAL INFORMATION	
2 Pole	10A (2A Inductive) 250V AC
4 Pole	5A (1A Inductive) 250V AC
IP Rating	IP40
Contact material is silver alloy	
Contact rating	2 pole is 10A 250V AC, 4 pole is 5A 250V AC
AC coil consumption	24V to 230V AC - 1.2VA
DC coil consumption	24V DC - 0.9W
Complies with UL/CSA	

2 Pole changeover relay

Pk Qty 5

H43 x W27 x D21mm

PRS208-24AC	8 Pin, 24V AC
PRS208-24DC	8 Pin, 24V DC
PRS208-115AC	8 Pin, 115V AC
PRS208-230AC	8 Pin, 230V AC

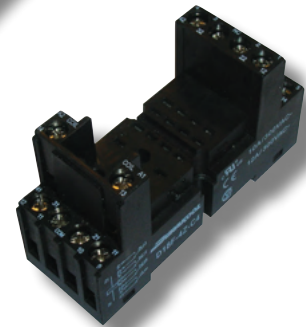


PRSB8

8 Pin DIN Rail base for 2 Pole changeover relay

Pk Qty 10

H43 x W75 x D27mm

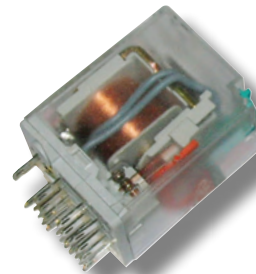


4 Pole changeover relay

Pk Qty 5

H43 x W27 x D21mm

PRS414-24AC	14 Pin, 24V AC
PRS414-24DC	14 Pin, 24V DC
PRS414-115AC	14 Pin, 115V AC
PRS414-230AC	14 Pin, 230V AC

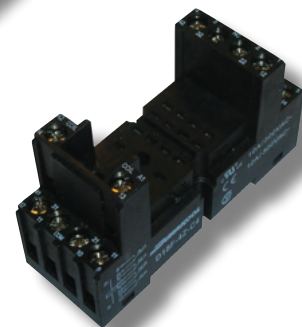


PRSB14

14 Pin DIN Rail base for 4 Pole changeover relay

Pk Qty 10

H43 x W75 x D27mm



**GREEN
BROOK**
Lighting

